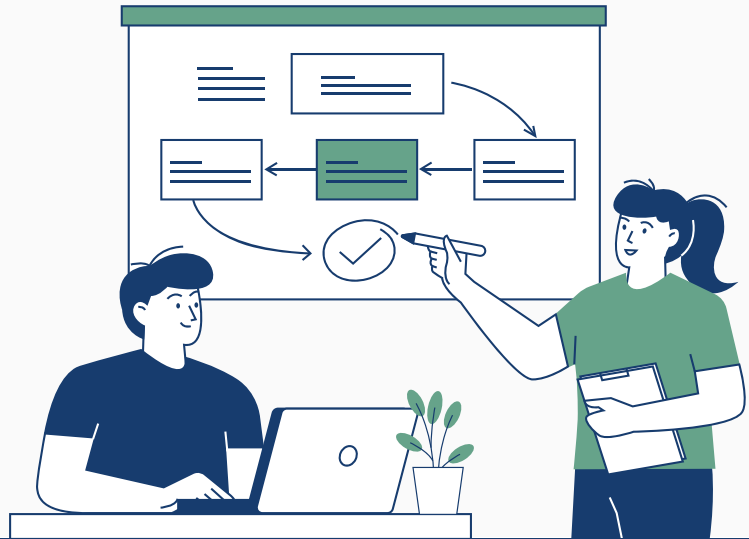


# Technology Roadmap Assessment



**Our Technology Roadmap Assessment is a unique opportunity for you to discover how to overcome business challenges using tools you already own.**

Through our assessment, we'll help you learn about the features you may be underutilising and plan how you can maximise the value you receive from your investment in Microsoft technology.

Core's Technology Roadmap Workshop is an invitation-only value add service (no extra cost) for our most valued customers who meet our minimum licensing criteria.

The sessions are delivered by Core's Microsoft Solutions Specialists and just like the modern workplaces we help our customers create, the Technology Roadmap Assessment can flex to your schedule and requirements. These complimentary sessions provide valuable insights that provide direction, confidence, knowledge, results and maximise investment value.



## Benefits of the assessment:

- 🕒 Align your business challenges to tools you already pay for
- 🕒 Improve clarity on performance of existing technology estate
- 🕒 Better understanding of alignment between technology and business leaders
- 🕒 Discover and understand overlooked features that could reduce reliance on third-party solutions
- 🕒 Cost saving through retiring and/or replacing expensive, old or poor technology
- 🕒 Flexible use of time to ensure you receive the maximum value from the sessions
- 🕒 Sessions can be recorded for later use or to be shared with stakeholders
- 🕒 Greater awareness of new and emerging technology along with the 'art of the possible'
- 🕒 Ability to build an actionable plan to realise the full potential of technology
- 🕒 Discuss your challenges with experienced Microsoft Solutions Specialists; and
- 🕒 Improve the returns on your investment in Microsoft technology



*The difference with Core is, they asked us questions no other technology company has asked, and questions we didn't know the answers to.*

Business Systems Manager - Electronics Manufacturer



## How the sessions work

We start by taking time to listen to the strengths and weaknesses in your journey to Microsoft 365 so far, asking questions that will frame the sessions to deliver the maximum value.

Your responses will provide the framework for a deep dive into some, or all, the following areas:



The aim of the Technology Roadmap Assessment is to fill those gaps in your knowledge so you can move forward confidently with Microsoft 365 and achieve success.

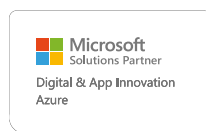
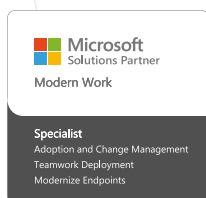
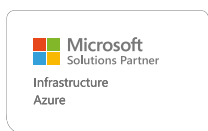
The sessions are a combination of demonstrations and discussions exploring Microsoft 365 products, covering one full day – which can be split into bitesize chunks to suit your calendar if you'd prefer not to do it in one day. We want you to get the most from the Technology Roadmap Assessment, and from your Microsoft 365 investments. That's why the sessions are completely bespoke and guided by the challenges of your business and the areas you wish to focus on.

If you are looking to create a plan around Microsoft 365, but you are unsure where to begin, this is a fantastic opportunity to discuss your objectives with experienced Microsoft Specialists. You don't know what you don't know, so why not take advantage of this complimentary offering and discover how Microsoft technology can help eliminate your business challenges.



## Why Core?

As a Microsoft Solutions Partner with more than three decades of experience delivering Microsoft solutions, we understand how to unleash potential and unlock value for our customers who have invested in Microsoft technology. We help improve the transition from E3 to E5 licensing, enabling enhanced security and mobility capabilities for our customers, without the need for third-party solutions.



## Next steps

To find out if your business is eligible for a complimentary Technology Roadmap Assessment, click the button to the right, or call +44 20 7626 0516 to talk to one of our advisors.

Check your eligibility for our Technology Roadmap Assessment.

[Check your eligibility](#)